

Technical Specifications

Minimum Air Flow (at 100 psi)

Internal Mix Gel	12.5 scfm (0.354 meters ³ per minute)
Internal Mix Chop	2.25 scfm (0.064 meters ³ per minute)
External Mix	2.0 scfm (0.06 meters ³ per minute)
Cutter.....	16.5 scfm (0.467 meters ³ per minute)

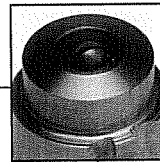
Maximum Air Pressure..... 125 psi (8.7 bar, 0.87 MPa)

Weight

Internal Mix Gel.....	2.32 lb (1.05 kg)
Internal Mix Chop	2.46 lb (1.12 kg)
External Mix Gel	2.08 lb (0.94 kg)
External Mix Chop	2.33 lb (1.04 kg)
Cutter.....	2.00 lb (0.91 kg)

Manual (Guns and Cutter)..... 3A0232

How to read a composite spray tip number



EXAMPLE

C S T 5 2 1

CST =
Composite
Spray Tip

4TH DIGIT = pattern width code.
Double the number to get
pattern width at 12 inches.

In this case, 5 equals a
10-inch spray pattern width at
a 12-inch spraying distance.*

LAST TWO DIGITS =
Orifice size.

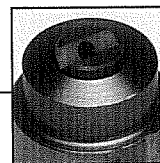
In this case,
21 is equivalent
to a .021
diameter orifice.

Airless Composite Spray Tips

Part Number

CST215	CST223	CST343
CST415	CST423	CST443
CST217	CST523	CST543
CST417	CST427	CST351
CST517	CST527	CST451
CST219	CST231	CST551
CST419	CST431	CST651
CST519	CST531	CST461
CST221	CST235	CST561
CST421	CST435	CST661
CST521	CST535	CST471

How to read an impingement tip part number



EXAMPLE

C S T S 7 5

CST =
Composite
Spray Tip

4TH DIGIT =
S for stainless
steel or T for
tool steel

5TH DIGIT =
Spray pattern width code.
Double the number to
get pattern width at
18 inches.

In this case, 7 equals
a 14-inch pattern
width at an 18-inch
spraying distance.*

6TH DIGIT =
Orifice size code.
Number roughly matches
the diameter of the
angled hole size.

In this case, 5 is
equivalent to a
.052-inch diameter
angled hole.

Impingement Composite Spray Tips

Part Number

CSTS42	CSTS64	CSTS75
CSTS73	CSTS74	CSTS56
CSTS34	CSTS84	CSTS66
CSTS44	CSTS55	CSTS57
CSTS54	CSTS65	CSTT57

*Pattern size will vary depending
on changes in pressure, viscosity
and temperature.